

GETTING HERE

Herbert Art Gallery & Museum, Jordan Well, Coventry CV1 5QP
T: 024 7683 2386 E: info@theherbert.org W: www.theherbert.org

Opening Times

Sunday - Monday 12pm-5pm / Tuesday - Saturday 10am-5.30pm

NEW Opening Times from 5 April

Monday - Saturday 10am-4pm / Sunday 12pm-4pm



Information for People with Disabilities

Parking for Blue Badge holders is on Bayley Lane opposite the entrance to the Herbert. Lift access and adapted toilets available.



Bus

There is a bus stop just outside the Art Gallery and Museum. For more information about city centre routes please call 024 7681 7035.



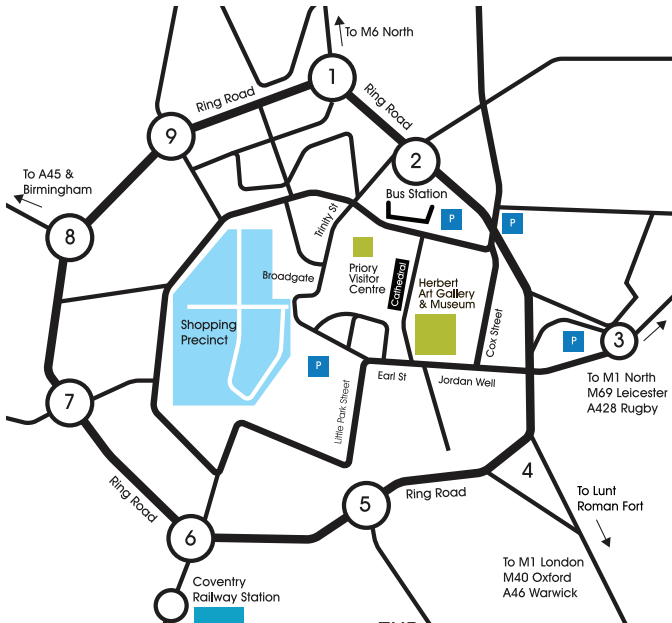
Train

We're just a 10 minute walk from Coventry station. Rail information can be found on 08457 484 950.



Car

We are conveniently situated in the heart of Coventry city centre, and adjacent to Coventry Cathedral & University. There are a number of public car parks nearby.



BBC

**THE
BRITISH
MUSEUM**

A Partnership UK project



RENAISSANCE WEST MIDLANDS
museums for changing lives



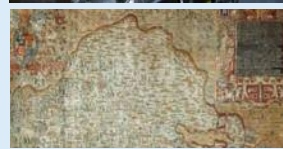
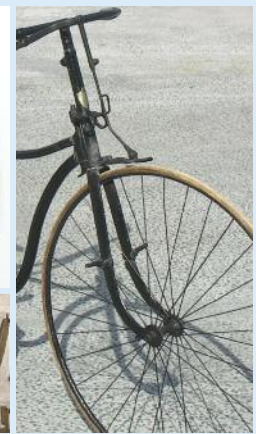
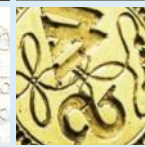
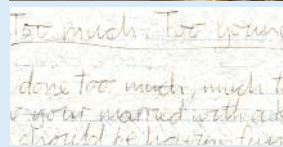
Coventry Heritage & Arts Trust Ltd. A registered charity number: 1124704

A HISTORY OF THE WORLD

A BBC AND BRITISH MUSEUM PARTNERSHIP

Coventry and Warwickshire Exhibition
500,000 Years Ago to Modern day
27 March - 7 April

Look inside for details of our FREE
BBC One Night at the Museum
Event on March 31



Herbert
Art Gallery & Museum, Coventry

Admission FREE

What is the BBC A History of the World Project?

A History of the World is a partnership project by the BBC and the British Museum which extends across the UK. The heart of the project is the Radio 4 series A History of the World in 100 Objects, which focuses on 100 objects from the collections of the British Museum.

Why are Coventry and Warwickshire Museums getting involved?

Inspired by the series, museums across the country have teamed up with the BBC in their area and chosen objects from their own collections that reflect world history from their perspective.

The FREE exhibition hosted at the Herbert Art Gallery & Museum from 27 March to 7 April 2010 brings together the items chosen to represent museum collections in Coventry and Warwickshire. They illustrate the diverse range of subjects covered by museums in the area, with items ranging in date from half a million years ago to the 1980s. All of the items have significance beyond the region. This is the only time they will be displayed together in one place.

The exhibition, hosted in the Herbert's stunning glass covered court area, forms part of our 50th anniversary programme of events and exhibitions.

Do you want to join us for an exclusive Night at the Museum?

Join us on 31 March for a special one-off celebration of these amazing regional objects and what they mean in today's world. From 6.30pm to 9.30pm the Herbert will come alive with history and culture. The Royal Shakespeare Company will be performing an excerpt from Romeo and Juliet; there will be flint knapping demonstrations; paper aeroplane making and racing; a timeline of the world which visitors can add their own significant dates to; quizzes; poetry recitals; object handling; music and the opportunity to experience the Herbert at night!

Entry is FREE but you will need to apply for tickets through www.bbc.co.uk/coventryandwarwickshire. Tickets are limited.

BBC
**COVENTRY &
WARWICKSHIRE**

ART FUND PRIZE 2010. The Herbert is nominated...don't forget to vote for us at www.artfundprize.org.uk/2010/vote



The Herbert Art Gallery & Museum is celebrating its 50th Anniversary! Over the next year we have arranged a special programme of events, activities, displays and exhibitions for you to engage with, participate in and enjoy!

Herbert at 50! FREE

Each week throughout the year we will display a specially selected unique item from our collections. The items have been chosen by members of staff to reflect the diversity of the collections and include many items rarely seen by the public. There is also a display about the life and work of Sir Alfred Herbert.

Last Saturdays FREE

We are proud to be a family friendly venue and as part of our 50th celebrations have dedicated the Last Saturday of every month to family visitors. Join us for drop in sessions and booking essential activities including workshops, performances and games.

27 March, 10:30am - 1:00pm

A host FREE activities inspired by this exhibition.

50th Birthday Family Trail FREE

Explore the wonder of our collections within our award winning permanent galleries by picking up a 50th Birthday Family Trail from reception

Reel Parents Parent and Baby Screenings

The Herbert presents parents with babies under the age of one the perfect opportunity to relax and share a movie with other like minded parents.

The Friends of the Herbert Art Gallery & Museum

What better year to re-establish our Friends scheme than our 50th Anniversary! The organisation will provide a forum for people to meet, be entertained and work together towards a good cause.

For details of how to become a member please visit www.theherbert.org or register for our Friends Launch event on 1 April at our main reception desk. Alternatively you can speak to Ben Goodwin on 02476 29 4736

DATES FOR YOUR DIARY

Fashion V Sport 13 February – 3 May FREE

Coventry Open 2010 2 April – 13 June FREE

Antony Sher: The Audience 9 – 28 April FREE

From Here to There: Contemporary work from the

Arts Council Collection 22 May – 18 July FREE

Coventry Schools Art Exhibition 12 June – 4 July FREE

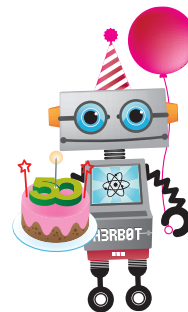
Inland Voyage: Life on the Coventry and Oxford canals

26 June – 30 August FREE

In the Big Treetop 17 July – 31 August FREE

Face to Face 31 July – 26 September FREE

Who Is Pharaoh Akhenaten? 7 – 14 September FREE



The Waverley Wood handaxe

500,000 years ago

Warwickshire
Museum



This is one of five andesite examples found at Waverley Wood, Bubbenhall. Along with other stone objects from the site, they are some of the oldest stone tools in the country.

The handaxes were found with the fossilised remains of straight-tusked elephants, prehistoric horses and water voles. These remains tell us that groups of an early form of human, *Homo heidelbergensis* ('Heidi'), were moving around this area of the Midlands half a million years ago, in an inter glacial period.

The handaxe was an efficient multipurpose tool (often called the Swiss Army Knife of the Stone Age) for butchering meat, splitting bones to extract the marrow and digging for roots.

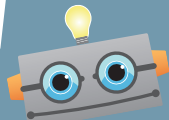
It is made of andesite rock which is likely to come from the Lake District and may have been deliberately chosen and brought into this area for its colour and appearance, which is very different to the local quartzite.



Warwickshire
County Council

Warwickshire Museum, Market Hall,
Market Place, Warwick, CV34 4SA
www.warwickshire.gov.uk/museum T: 01926 412500/2501

Could you face an
elephant with just this
hand axe to defend
yourself?



The Sheldon tapestry

1580s

Warwickshire
Museum



Few of us have walls large enough to hang this tapestry, never mind the three others in the set.

Ralph Sheldon commissioned four tapestry maps to be made in the 1580s to hang in his new house at Weston in Warwickshire. The other maps showed Oxfordshire, Worcestershire and Gloucestershire.

Ralph's father had set up the Sheldon tapestry works at Barcheston in south Warwickshire where local men trained to become weavers. This is the only surviving map of the four. It is important because it's a rare example of an English tapestry, and possibly unique as a tapestry. It is a pictorial record of Elizabethan Warwickshire, showing hills, rivers, open fields and forests, towns, villages and the great houses of the gentry.

It shows the Warwickshire of William Shakespeare, the landscape which inspired the physical world of many of his plays.

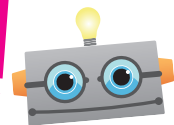
(It is on display at Warwickshire County Museum in Warwick, it cannot be moved to the Herbert.)



Warwickshire
County Council

Warwickshire Museum, Market Hall,
Market Place, Warwick, CV34 4SA
www.warwickshire.gov.uk/museum T: 01926 412500/2501

Can you spot your
town or village?



Shakespeare's signet ring

16th century



Shakespeare
Birthplace Trust

Nearly two hundred years after Shakespeare's death, labourers working in a field next to the Holy Trinity Church, Stratford-upon-Avon, found a gold 16th century seal ring with the engraved initials 'WS'.

Signet rings were worn on the little finger of the left hand and were used to mark the user's initials on wax seals, like signing a cheque.

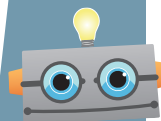
Wishful thinking or had Shakespeare lost his seal ring? Intriguingly the writer had originally intended to endorse his will by attaching his seal to the document. However, he later crossed out the word 'seal' at the bottom and just signed the document.

The discovery of the ring caused much excitement and in March 1818 the painter Benjamin Robert Haydon, wrote to the poet John Keats, 'I shall certainly go mad! In a field at Stratford-upon-Avon, in a field that belonged to Shakespeare, they have found a gold ring and seal, with the initial thus - W.S. and a true lover's knot between. If this is not Shakespeare who is it?'



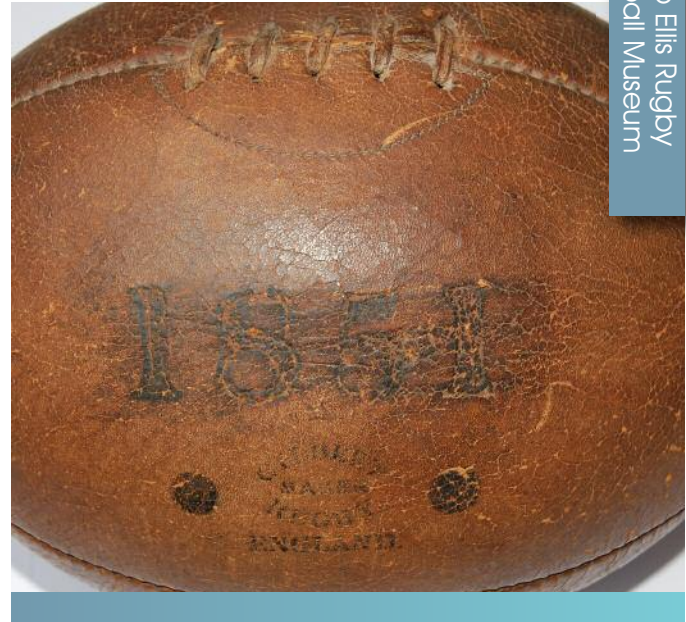
The Shakespeare Birthplace Trust
Shakespeare Centre, Henley Street, Stratford upon Avon,
Warwickshire CV37 6QW
www.shakespeare.org.uk T: 01789 204016

What do you think happened?
Can you tell the story of how the ring was lost?



Rugby ball

1851



Webb Ellis Rugby
Football Museum

This leather rugby football was made by William Gilbert, a boot and shoe maker for Rugby School. He also made footballs for them. By the time of the Great Exhibition in 1851 the new sport of rugby football was becoming popular.

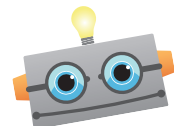
Although Gilbert was not the only rugby football producer by that time he is thought to be the earliest and was the first to promote himself on this commercial level. The Great Exhibition was the biggest national celebration of British manufacturing. There were 13,000 exhibitors, but only 25 manufactured sporting equipment and only one related to rugby football. William Gilbert on 'Stand 187' became the first major commercial producer with this template ball as his product.

The ball was made of cowhide leather and when it was produced would have had an inflated pig's bladder in the interior. The plum shape of the ball became the standard for 19th century rugby ball production until the International Rugby Board set the first international standard dimensions in 1892.



Rugby Art Gallery & Museum
5-6 Matthews Street, Rugby, Warwickshire, CV21 3BY
www.rugbyfootballmuseum.org.uk T: 01788 533217

Could you think of a new game to invent using an unusual shaped ball?



Leamington Lawn Tennis Club trophy 1872

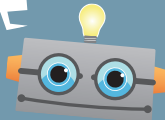
Leamington Spa
Art Gallery & Museum



Royal Leamington Spa was home to the first lawn tennis club in the world. Lawn tennis is said to have been developed by Major Harry Gem and Jean Batista Perera. Major Gem founded the club in 1872 and became its first president.

When the Leamington Lawn Tennis Club tournament was won three years in a row by Dr Joshua Pim, this silver trophy was awarded to him permanently. Pim (1869-1942) was born in Wicklow, Ireland and was considered to be the finest tennis player of his day. He won two Wimbledon singles titles in 1893 and 1894. In 1902 he captained the Davis Cup team to America. The trophy was presented to Leamington Spa Art Gallery & Museum by the Pim family.

Can you find the name of the winner engraved on the cup?



ROYAL PUMP ROOMS
LEAMINGTON SPA
Art Gallery & Museum

Royal Pump Rooms

The Parade, Royal Leamington Spa, CV32 4AA
www.warwickdc.gov.uk/RoyalPumpRooms T: 01926 742700

The Rover safety bicycle 1880s

Coventry
Transport Museum



Why was it a 'safety' bicycle? All the elements of today's bicycle are here; a diamond shaped frame, pedals below the saddle that power the back wheel through a chain and gears, handle bars to the front wheel, and forks supporting the front wheel.

Before J K Starley's new design, cycles had large front wheels and high saddles, like Penny Farthings. Cycling could be like the 'extreme' sports of today.

J K Starley and William Sutton's cycle manufacturers of West Orchard, Coventry exhibited their new design in London in 1885. This was to become the standard form of most bicycles from the 1890s onwards. In 1896 Starley changed the company name to the Rover Cycle Company.

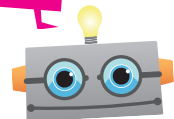
It can be argued that the bicycle has brought more social mobility to more people than any other form of transport and is perhaps ready to become the future of personal transport as climate change means other forms of transport may no longer be viable. If so, the significance of the Rover Safety Bicycle cannot be over emphasised.



Coventry Transport Museum

Millennium Place, Hales Street, Coventry CV1 1JD,
www.transport-museum.com
enquiries@transport-museum.com T: 024 7623 4270

This bike is 130 years old. What changes do you think could make bicycles last another 100 years?



The Smallman safety clip

1893

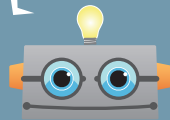


Nuneaton Museum
& Art Gallery

The safety clip was invented and refined by Mr A White of Hartshill and James Smallman of Nuneaton between 1893 and 1912. This model was used to demonstrate the safety clip across the world.

At the time of its invention coal was moved around the mines in tubs linked to a wire rope. The clips were developed to make attaching the tubs to the rope safer. Previously crushed limbs and trapped fingers were a frequent problem. The clip was simple in design and incorporated a locking device to stop the tubs becoming detached accidentally. The clips continue to be used today in India.

In Britain, children no longer work in mines. But over 1 million children around the world still do.



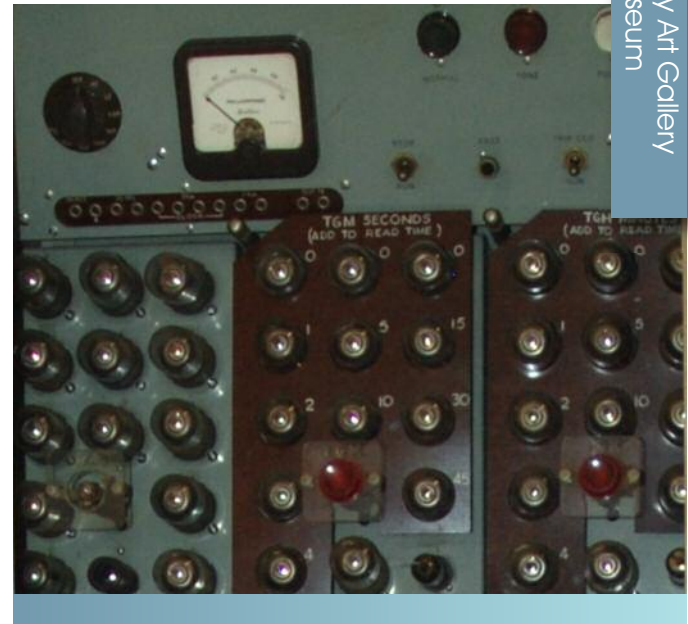
MUSEUM
& ART
NUNEATON
GALLERY

Nuneaton Museum & Art Gallery

Riversley Park, Coton Road, Nuneaton CV11 5TU
www.nuneatonandbedworth.gov.uk/museum

Cold cathode clock

1927



Rugby Art Gallery
& Museum

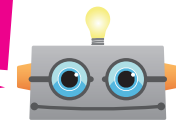
From 1927 until 1st April 2007 all clocks in the UK were set by a time signal transmitted from Rugby Radio Station.

This cold cathode clock was one of the instruments used. It was one of the first pieces of electronic equipment to transmit the 'Master Standard Frequency' signal from the station site at Hillmorton near Rugby.

The six pips heard on the radio before news bulletins and the 'speaking clock' were kept in time by this clock. It also had global coverage and could be picked up by laboratories and ships around the world. Ships could correct their chronometers and hence know their longitude accurately.

An Atomic clock replaced the cold cathode clock in 1967. The time signal was moved from Rugby to Cumbria in 2007.

The clock uses lights, like fluorescent lights, instead of numbers on a dial to tell the time.



RUGBY
ART GALLERY
& MUSEUM

Rugby Art Gallery & Museum

5-6 Matthews Street, Rugby, Warwickshire, CV21 3BY
www.rugby.gov.uk T: 01788 533217

Concrete sign Coventry Strasse

1940

Herbert Art Gallery
& Museum

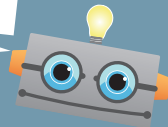


This concrete sign is from a runway in France. The runway was used by German aircraft, which bombed Coventry in 1940 and was given the name Coventry Strasse after the raid.

The sign was removed by British soldiers when the runway was captured and was presented to the city of Coventry in 1944.

The sign now forms the centrepiece in the award winning Peace and Reconciliation gallery at the Herbert Art Gallery & Museum. This gallery explores themes around peace and reconciliation through the history of Coventry, starting with the Blitz of 1940.

Did you know
Coventry Strasse
means Coventry
Street?



Herbert
Art Gallery & Museum, Coventry

Herbert Art Gallery & Museum

Jordan Well, Coventry CV1 5QP

www.theherbert.org

info@theherbert.org T: 024 76838623

Whittle W2/700 Jet Engine

1943

Midland Air
Museum

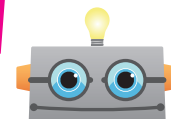


Frank Whittle first patented his 'turbojet' engine in 1930, but his ideas did not catch on with his Air Ministry employers. Whittle's ten cylinders distributed the massive heat and thrust which could blow up an engine. More backing was given to Whittle as fears grew of possible war in Europe.

By 1937 the engine was being tested in the lab. On 15th May 1941 an experimental aircraft first flew with a W1 Whittle engine with a thrust of 1000lbs at RAF Cranwell England. This led to the Gloster Meteor, which became the first Allied jet aircraft to fly operationally in World War II.

On display at the Midland Air Museum is one of the early engines produced by Coventry born Sir Frank Whittle's Power Jets factory at Whetstone England. The engine is a Centrifugal W2/700 which produced 2500lbs thrust and was also the type to be used in the proposed Miles 52 Supersonic Experimental Aircraft Project of 1944.

Can you work out
how the jet engine
works?



Midland Air Museum,

Coventry Airport, Coventry Road, Baginton, Coventry,

West Midlands CV8 3AZ

www.midlandairmuseum.co.uk 024 7630 1033

E-Type Jaguar

1975



Coventry
Transport Museum

The E-Type Jaguar first went on sale to the public in 1961. Very soon its sleek design and great performance made it popular with the motoring press and those that could afford to purchase one. It became an icon of the 1960s featuring in many movies, including *The Italian Job* along with yet another iconic West Midlands car, the Austin Mini Cooper.

The E-Type revolutionised sports cars design with performance, handling and looks all ahead of its time.

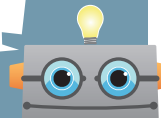
The museum's E-Type is one of the last 40 to be produced in the Brown's Lane factory in Coventry. It was made especially for the 1975 Earl's Court Motorshow, where it won an award for best interior coachwork. This particular car has covered a little over 600 miles and is very much in its original condition. It has a 5.3 litre 12-cylinder engine and is capable of reaching speeds upwards of 150mph. It proved its popularity beyond doubt by being manufactured from 1961 to 1975, with only minor styling modifications. Some 70,000 models were sold over its life-span.



Coventry Transport Museum

Coventry Transport Museum
Millennium Place, Hales Street, Coventry CV1 1JD,
www.transport-museum.com
enquiries@transport-museum.com T: 024 7623 4270

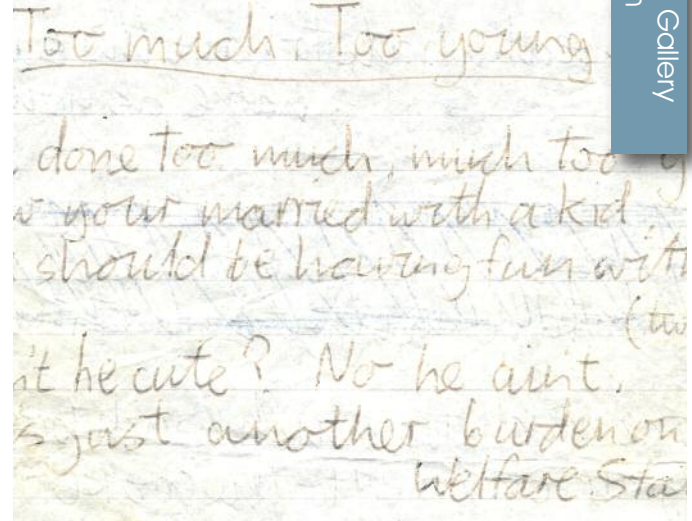
If you were a passenger
in this car, who would
you want the chauffeur
to be?



Too Much Too Young

handwritten lyrics by Jerry Dammers

1980



Herbert Art Gallery
& Museum

The lyrics and their author represent a significant although short-lived cultural movement in the late 1970s and early 1980s. 2 Tone was the brainchild of Jerry Dammers.

It was a distinctive new sound that emerged from Coventry in the late 1970s, combining elements of ska, reggae, punk and pop music. Dammers both devised the iconic black and white chequered label design and logo of the movement and fronted its most successful band, The Specials.

2 Tone bands challenged racist attitudes through their lyrics and celebrated cultural diversity in bringing together black and white musicians and the influences of black and white music.

'Too Much Too Young' reached number one in the charts in 1980 and was followed by the equally successful 'Ghost Town'. Although the heyday of 2 Tone was short-lived, The Specials recently reformed for the 30th anniversary of 2 Tone with a series of successful concerts including their home city of Coventry.

Herbert

Art Gallery & Museum, Coventry

Herbert Art Gallery & Museum
Jordan Well, Coventry CV1 5QP
www.theherbert.org
info@theherbert.org T: 024 76838623

What song lyrics from
today would you save
in a museum?

