

# Herbert

Art Gallery & Museum, Coventry

What's On

Dec – Feb 2012

exhibitions / art  
events / history

families / talks

café / shop



Admission **FREE**  
Donations welcome

# A world of discovery awaits you...

Welcome to our biggest ever Winter programme of exhibitions and events. We have three fascinating exhibitions this season, representing a diverse range of landscapes. As always we have a wide range of creative events and workshops for adults and families, all of which will delight and inspire.

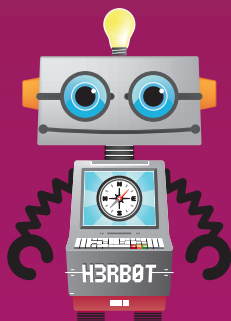
Enjoy the work of a recent Turner prize nominated artist, as you view the nostalgic urban realisation of Coventry's city scapes in the new **FREE George Shaw: I woz ere** exhibition. Discover the seasonal landscapes sculpted with threads in **Seas of Grass**. Step back in time and discover the past glories of Coventry and Warwickshire with the superb historical views in **Wonderful Watercolours**.

Why not explore our 8 award-winning interactive galleries? Discover 2000 years of Coventry history, learn about the city's wartime experiences, wander through dazzling multi-sensory interactive displays and investigate the natural world. **There's so much to see; you'll discover something new every time you visit.**

Make your day complete and treat yourself to a delicious snack or hot lunch in our café, or why not finish off your festive shopping by browsing through our broad selection of beautiful crafts, inventive toys, jewellery and original artworks in our shop.

For full details of our exhibitions and packed events programme, please visit our website, or join our mailing list at [www.theherbert.org/mailling-list](http://www.theherbert.org/mailling-list)

**LET HERBOT  
SHOW YOU  
THE WAY!**



Elements



Discover Godiva



History Centre...  
now reopened

The Herbert would like to thank its kind supporters and donors.  
For more information please visit [www.theherbert.org/supporters](http://www.theherbert.org/supporters)

# Exhibition in Gallery 1

**George Shaw: I woz ere** FREE  
18 November – 11 March 2012

For the past 15 years, **recent Turner Prize nominee George Shaw** has been making paintings of the Tile Hill housing estate in Coventry where he grew up. Using Humbrol enamels, Shaw began making the works in a fit of nostalgia after he had left home and moved away. Over time, the paintings became a kind of 'I woz ere' written in retrospect.

For the first time, this collection of paintings is shown in the place they represent. Many viewers will recognise the specific pubs, street corners, rows of garages, trees and shops, but less familiar is the unsettling resonance that Shaw brings to the work.

Displayed alongside these landscapes is a new series of watercolours of previously painted places as they exist here and now.

Accompanying the exhibition, Shaw also presents the works of art he made as a child in the early 1970s to the summer before he went to art school in 1985.

There is a series of events linked to this exhibition. For further information please pick up a George Shaw exhibition leaflet or go to [www.theherbert.org](http://www.theherbert.org)

Enter our **EXCLUSIVE** competition to **WIN** an original **GEORGE SHAW** watercolour at [www.theherbert.org](http://www.theherbert.org)



This exhibition has been made possible by the generous support of the following organisations.



LOTTERY FUNDED

STANLEY THOMAS  
JOHNSON FOUNDATION

**WILKINSON**

Kindly supported by



Coventry Telegraph



national express Coventry



# Exhibition in Gallery 4

## Seas of Grass: Textiles & Paintings FREE

3 December – 24 January 2012

Michala Gyetvai is an artist who paints and sculpts with threads, stitching and layering her images in a variety of materials and employing hand and machine techniques. There is material aspect to the layers Gyetvai builds in her works. She twists fibres and uses thick wool, crocheted cotton, and fine silks to create an undulating relief, moulding the shapes of trees in a sculptural manner.

Her love of landscape, nurtured in childhood is the motivation behind her work and Kenilworth is the location for much of her subject matter. Her works capture the seasons - sunlight, contours and rhythms of the landscape and the colours she uses are as varied as the painter's palette.

There is a series of events linked to this exhibition. For further information please pick up a Seas of Grass exhibition leaflet or go to [www.theherbert.org](http://www.theherbert.org)



Detail of Rhapsody of Colour, 2011 © Michala Gyetvai

# Exhibition in Gallery 4

## Wonderful Watercolours:

Views of Coventry and Warwickshire FREE

25 February – 7 May 2012

Showcasing the Herbert's fine collection of watercolours, this exhibition will display over 100 views of Coventry and Warwickshire, creating a visual record of over two centuries.

Featuring well known artists including Paul Sandby, David Cox and Thomas Girtin, and local favourites HE Cox and Sydney Bunney, the paintings range in date from the 1770s to the 1990s.

Alongside familiar scenes, such as Kenilworth Castle and Warwick Castle, there are views of picturesque villages and a reminder of the glories of old Coventry in views of the city's medieval gates, buildings and streets.

Also included in the exhibition will be an album of views of Coventry painted in 1819 by William Brooke. Many of these superb works show streets and buildings which have now vanished. The album has just been purchased by the Herbert following a successful fundraising appeal.

The displays will also feature items from the Herbert's archaeology, history and archive collections, which are linked to some of the locations shown in the paintings.

**There is a series of events linked to this exhibition. For further information please pick up a the Wonderful Watercolours exhibition leaflet or go to [www.theherbert.org](http://www.theherbert.org)**



Bayley Lane and Cathedral, Coventry, 1918. By Herbert Edward Cox

# Events

## Booking Information for events

To book events please call 024 7629 4774, ask at reception or go to [www.theherbert.org](http://www.theherbert.org)

### George Shaw for Turner Prize Party FREE

Monday 5 December  
6.00pm – 9.00pm

The Herbert is joining the action on Turner Prize night with a live Channel 4 link to Baltic as the biggest prize in contemporary art is announced. Be the first to see I woz ere, Herbert Media's documentary about George Shaw. Help celebrate Coventry's art scene with a small dose of Pecha Kucha and arty goings on in the bar. **Tickets are required. Please book at the Herbert, Artspace or the Lanchester Gallery.**

### George Shaw: I woz ere Exhibition Insight FREE

Thursday 15 December &  
Tuesday 17 January  
12.30pm – 1.15pm

Join Rosie Addenbrooke the curator of the exhibition for an exclusive insight into this exhibition.  
**Booking is advised.**

### Seas of Grass Tour FREE

Saturday 17 December  
2.00pm – 3.00pm

Travel the seas with artist Michala Gyetvai as she takes you on a tour of her exhibition.  
**Booking is advised.**

### Mellow Christmas £5

Saturday 17 December  
Workshops 1.00pm – 4.00pm  
Storytelling 4.00pm – 4.45pm

A treat in the midst of the festive melee, take time out to relax and create with friends. Enjoy seasonal storytelling for grown-ups, create lino cut Christmas cards or make a gorgeous woven cuff.

**Booking required for workshops.**  
**STORYTELLING IS FREE.**

### Rare Exports Cert 15 FREE

Tuesday 20 December  
7.30pm – 9.00pm

In the depths of the Korvatunturi mountain lies the most closely guarded secret of Christmas which, when uncovered, will mean that Christmas will never, ever, be the same again. A creepy fantasy film in Finnish with English subtitles.  
**Booking is advised.**

### Landscapes in Threads workshops £35 for both workshops

Saturday 7 January &  
Saturday 21 January  
10.00am – 4.00pm

Led by artist Michala Gyetvai, take inspiration from landscapes and create your own mark making by experimenting with different fibres and threads.  
**Booking is essential. Materials are included.**

# Events

Film Screening Double Bill! FREE  
I woz ere 6.15pm  
Bronco Bullfrog **Cert 15** 7.00pm  
Tuesday 10 January

Join us for a screening of Herbert Media's documentary about George Shaw, followed by Bronco Bullfrog, chosen by George Shaw. This cult 1969 film depicts the romance of two teenagers who embark on an adventure with the borstal fugitive of the title. Come to one or both!  
**Booking is advised.**

Place of Words  
£8 each workshop or £20 for all  
Saturdays – 14 January,  
28 January & 11 February  
1.30pm – 3.30pm

Join poet-in-residence Roz Goddard for stimulating and joyous writing workshops exploring the theme of place and inspired by George Shaw: I woz ere. Culminating in an afternoon tea and performance on 25 February.  
**Booking is essential.**



City of Sanctuary  
Welcome to Coventry  
Wednesday 18 January –  
Sunday 5 February

This display shows work from new communities, exploring the welcome they experienced when they moved to Coventry. Supporting Holocaust Memorial Day and celebrating Coventry's status as a City of Sanctuary.

Stalker **Cert PG** FREE  
Sunday 22 January  
1.00pm – 4.00pm

Described as one of the greatest science fiction films of all time, and chosen by George Shaw, this 1979 film by Andrei Tarkovsky is a surreal and disturbing vision of the future. In Russian with English subtitles. **Booking is advised.**

Wikipedia and Me **FREE**  
Thursday 26 January  
12.30pm – 1.30pm

Ranked as one of the top 10 websites in the world Wikipedia is a major online resource. But what is Wikipedia and how does it work? Come along to this talk with local Wikimedian Fiona Apps to learn how you can contribute to this unique online encyclopaedia.  
**There is no need to book for this event.**



# Regular Events

The Last Tutorial:  
**George Shaw in Conversation**  
FREE

Thursday 9 February  
Exhibition open from 6.30pm,  
talk from 7.00pm



George Shaw discusses his work, current Herbert exhibition and the Turner Prize experience with his former art tutor and international visual artist, John Yeadon.  
**Booking is advised.**

**Enamel Urban Landscapes**  
£15  
Monday 20 February  
10.00am – 4.00pm

Led by enamel artist Carol Griffin you will produce at least 3 pieces of work using sgraffito techniques, masking, stencils and riso screens. Suitable for beginners or those with some experience. All materials are provided.  
**Booking is essential.**

**Tea Dance** £2  
Saturdays – 3 December,  
14 January, 11 February  
2.00pm – 4.00pm

Join us at this friendly and relaxed event with live music. **Please call 024 7622 7753 for details.**

**Herbert Illuminations** FREE  
Drop in to these lunchtime talks  
12.30pm – 1.30pm

**Winter from Afar**  
Tuesday 20 December  
An internationalist talk with storytellers from overseas reflecting on Christmas and New Year in their home country and in Great Britain.

**Emma Shannon Brutalist eXile**  
Tuesday 17 January  
Artist Emma Shannon describes how architecture can be translated into modern artworks, with an insight into using jacquard looms.

**Lynsey Hanley**  
**Landscapes and Memories**  
Tuesday 21 February

Author Lynsey Hanley talks about the effect of our built environment on the way we think about ourselves and our society.

**Harpotunities** FREE  
Saturdays, 10 December,  
14 January & 11 February  
1.00pm – 3.30pm

Informal drop-in sessions in the café where you can try your hand at the Celtic harp.

# Family Events

## Victorian Christmas Family Day FREE

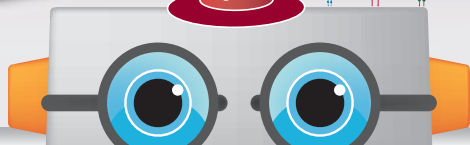
Saturday 10 December  
Drop in any time between  
11.00am – 4.00pm

It's 1890 and Coventry is experiencing a very cold and snowy Christmas... Be transported back to Victorian England to discover a wealth of Christmas preparations and activities. Try making beautiful crafts and decorations, watch demonstrations, handle Victorian objects and listen to spooky Victorian ghost stories. For exact times of all our activities on the day, please go to [www.theherbert.org](http://www.theherbert.org)

Early Years Creative  
Movement Classes FREE  
Tuesdays 13 December,  
17 January & 14 February  
10.30am – 11.15am  
11.30am – 12.15pm

A playful movement class for children aged 2-5 years and their carers, encouraging children's individuality and creativity to develop. **Children must be accompanied by an adult at all times.** Booking is essential as spaces are limited. Please call reception on 024 7629 4774 to secure your place.

**FREE**  
family events  
& activities



## Tiny Tot Explorers: Sensory Play FREE

Wednesday 14 &  
Thursday 15 December  
10.30am – 11.30am &  
1.00pm – 2.00pm

This session for children aged 1-3 is inspired by the colours, sights and textures of winter, with plenty of wet and dry materials to explore.

**Booking is essential as spaces are limited.**  
Please call 024 7629 4774.

## Get Up and Get Creative FREE

Saturday 28 January  
Drop in any time between  
12.00pm – 4.00pm

A perfect antidote to the January blues, we'll provide plenty of making activities and opportunities to explore the Herbert. Content suitable for 4+ but all are welcome. At busy times you may be asked to wait.

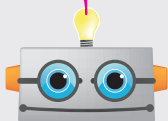
February half-term:  
**Landscapes and Cityscapes**  
FREE

Monday 13 – Friday  
17 February  
Drop in anytime between  
10.30am – 12.30pm &  
1.30pm – 3.30pm

Join us for a week exploring our landscapes and cities, and learn to look at your environment with a new perspective. Suitable for 4+ but all are welcome. At busy times you may be asked to wait. For detailed times, please see our website nearer the time.

# Getting Here

Scan this code with your smart phone to go to our website



## Herbert Art Gallery & Museum

Jordan Well, Coventry CV1 5GP

T: 024 7683 2386

E: [info@theherbert.org](mailto:info@theherbert.org)

W: [www.theherbert.org](http://www.theherbert.org)

### Monday – Saturday

10.00am – 4.00pm

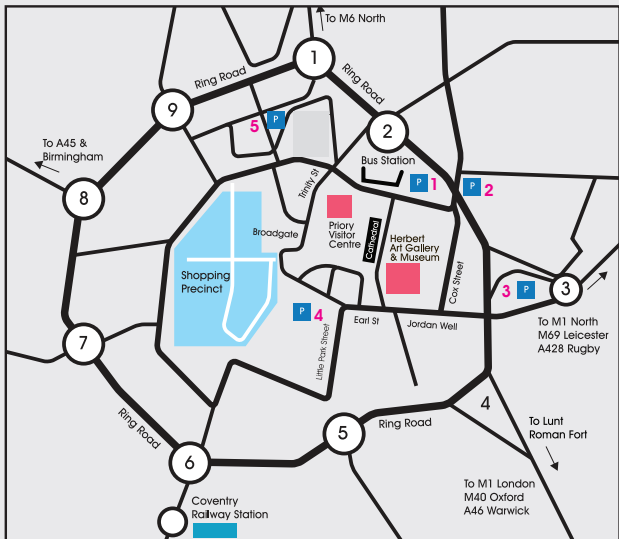
### Sunday

12.00pm – 4.00pm



Keep up to date – follow us on facebook and twitter, watch us on you tube or check out our blog at

[www.theherbert.wordpress.com/](http://www.theherbert.wordpress.com/)



### Car park postcodes

1 Cox Street, CV1 5LW 2 Lower Ford Street, CV1 5PW 3 Barracks, CV1 1DD  
4 Salt Lane, CV1 2GY 5 Silver Street CV1 1HW

### Information for People with Disabilities



Parking for Blue Badge holders is on Bayley Lane opposite the entrance to the Herbert. Lift access and accessible toilets are available.

### Bus



For full details on all the National Express Coventry Bus services please visit the Travelcard and Information shop at Pool Meadow Bus Station, call Traveline on 0871 200 22 33 or go to [www.nxcoventry.co.uk](http://www.nxcoventry.co.uk)

### Train



The Herbert is a short walk from Coventry Station.

Rail information can be found on 08457 484 950

### Car



The Herbert is situated in Coventry city centre. There are a number of public car parks nearby. There are also two Park and Ride services operating, for more information call 0871 200 22 33.

If you require this information in another format please contact us on 024 7683 2386

All information correct at time of going to press. We reserve the right to change or cancel events or exhibitions without prior notice. Please check our website before your visit.

The Herbert Art Gallery & Museum operates through a unique partnership of the following organisations:



Coventry Heritage & Arts Trust Ltd. Registered charity number 1124704

Cover Images. Scenes from The Passion: The Goal Mouth, 1999, copyright George Shaw, courtesy Wilkinson Gallery, London

Scenes from The Passion: The Black Prince, 1999, copyright George Shaw, courtesy Wilkinson Gallery, London

Scenes from The Passion: The shops looking towards Roberts VG and the Launderette, 1997, copyright George Shaw, courtesy Wilkinson Gallery, London